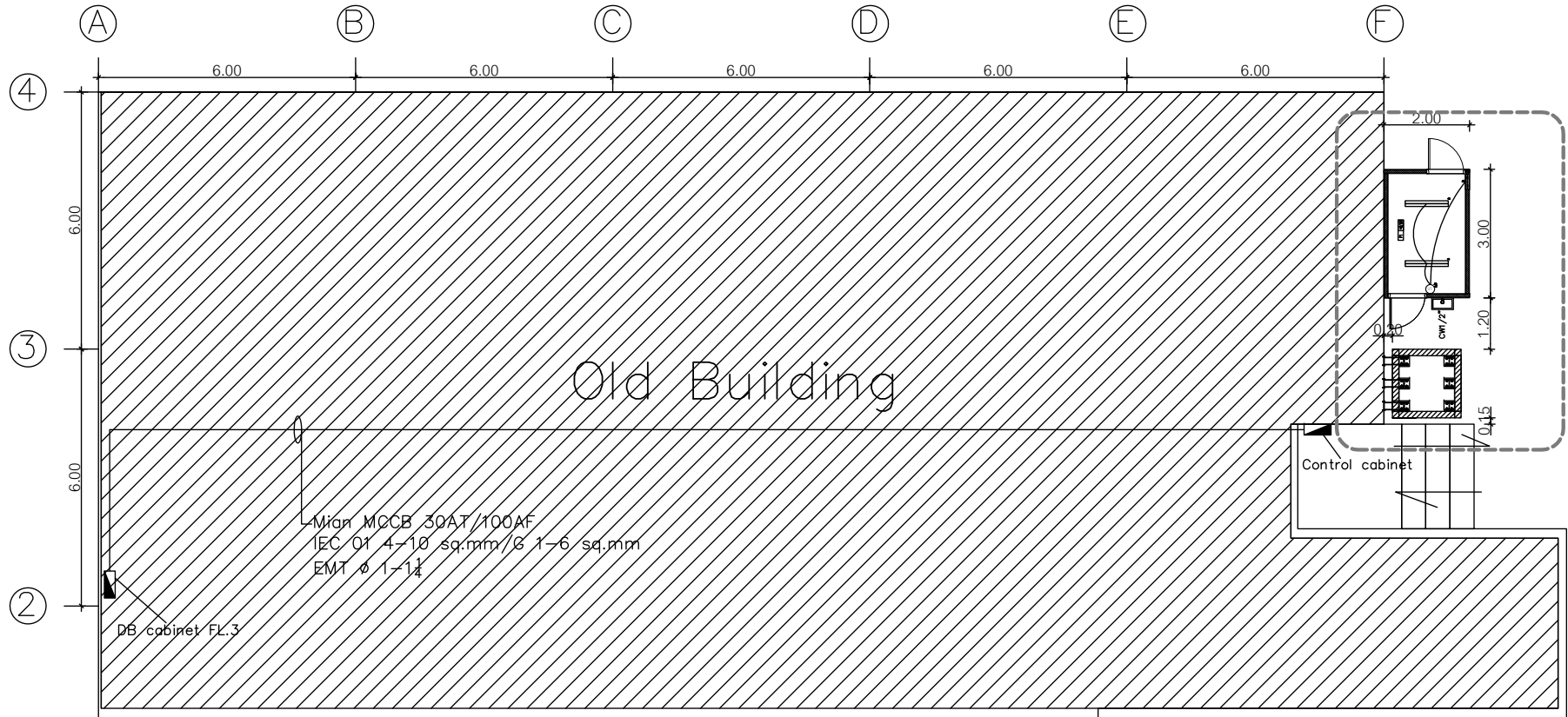


โครงการก่อสร้างลิฟท์บนขย:ติดเขื้อและโรงพักขย:ติดเขื้อ
อาคารห้องปฏิบัติการควบคุมโรค
จังหวัดพิษณุโลก



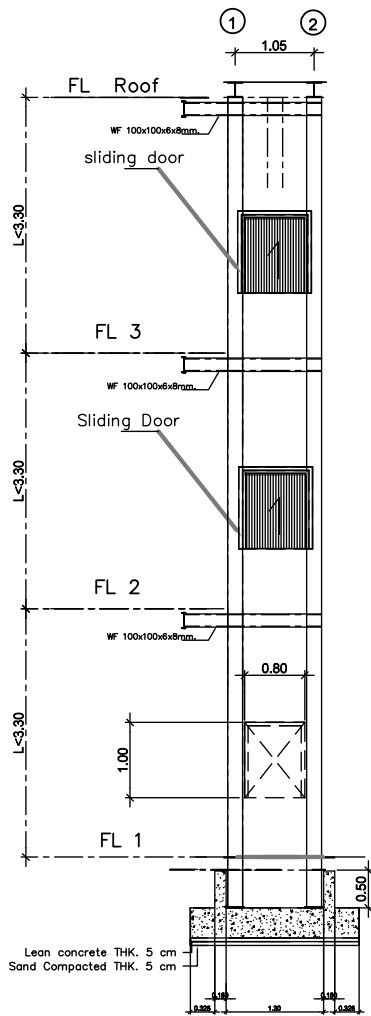
กรมควบคุมโรค
สำนักงานป้องกันควบคุมโรคที่ 2 จังหวัดพิษณุโลก



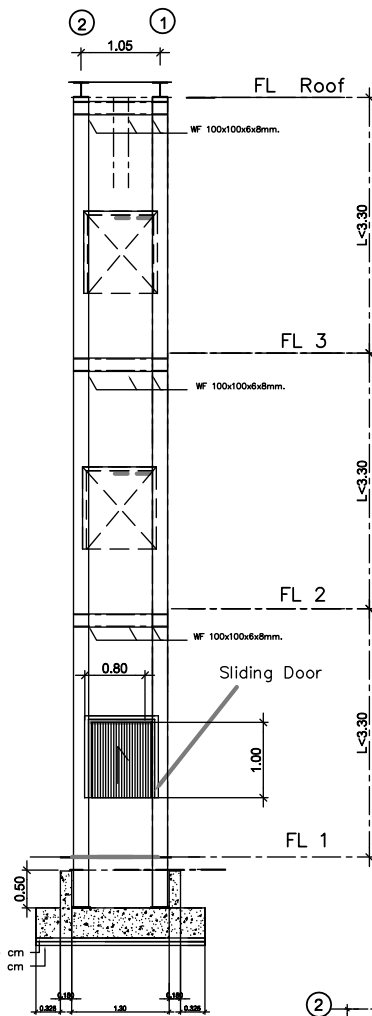
LAYOUT PLAN
SCALE 1:100



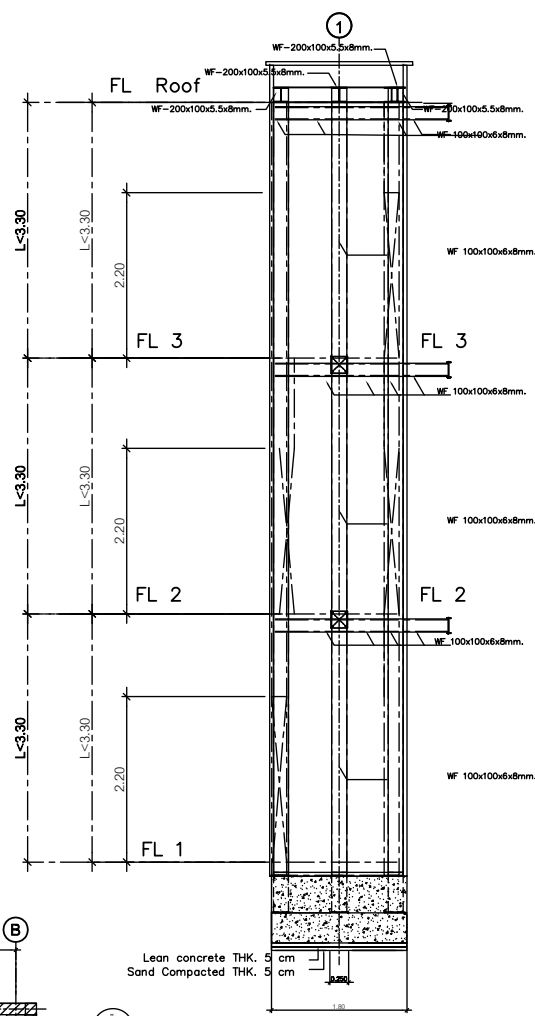
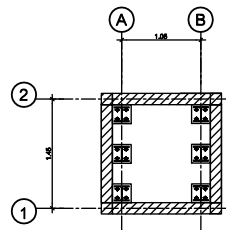
	PROJECT	ARCHITECT	ENGINEER AND DRAFTSMAN	SHEET NO.
	โครงการห้องสมุด 3 ชั้น OWNER SITE		สัญญาที่ สบคทท ๘๘.๙๓๖๕ <i>[Signature]</i>	DRG. TITLE1 LAY OUT PLAN Drg. Title2 Drg. Title3
				01 DATE



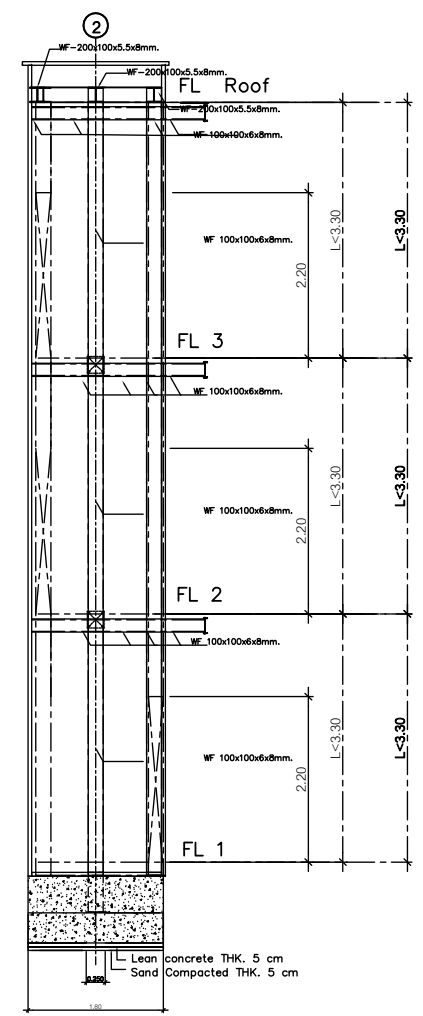
Elevation A
SCALE 1:50



Elevation B
SCALE 1:50

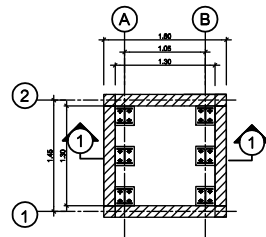
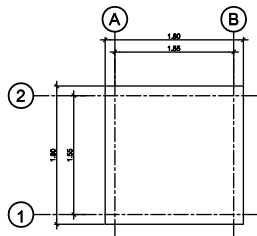


Elevation C
SCALE 1:50

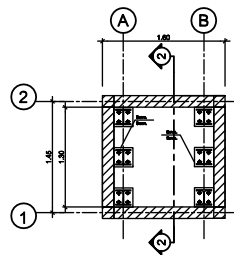


Elevation D
SCALE 1:50

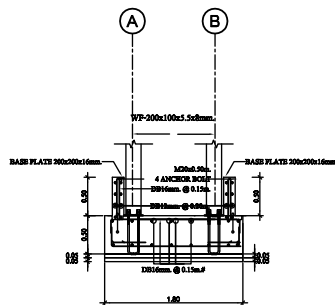
PROJECT	ARCHITECT	ENGINEER AND DRAFTMAN	SHEET NO.
โครงการก่อสร้างที่พัก 3 ชั้น OWNER SITE		บริษัท สถาปนิก 9365 <i>Signature</i>	02
		DRG. TITLE1 ปลูก Drg. Title2 Drg. Title3	DATE



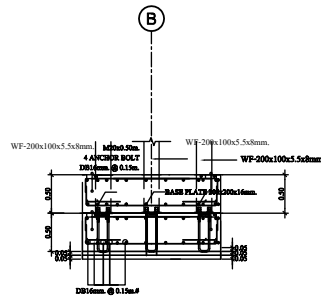
Foundation plan
SCALE 1:25



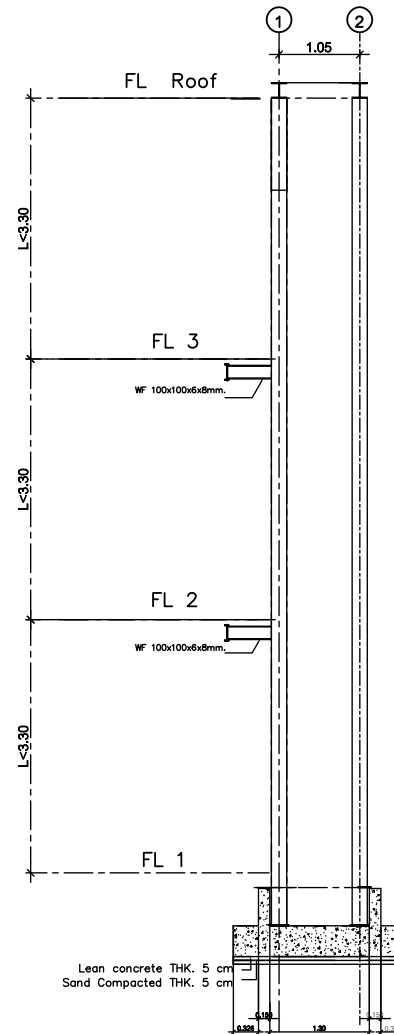
Lift plan FL.1-FL.3
SCALE 1:25



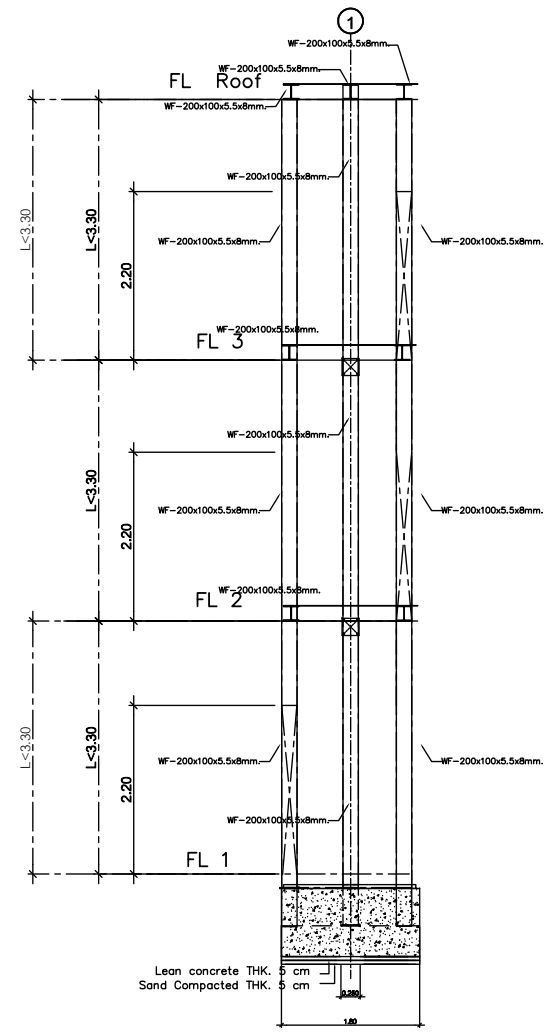
Section foundation 1
SCALE 1:25



Section foundation 2
SCALE 1:25

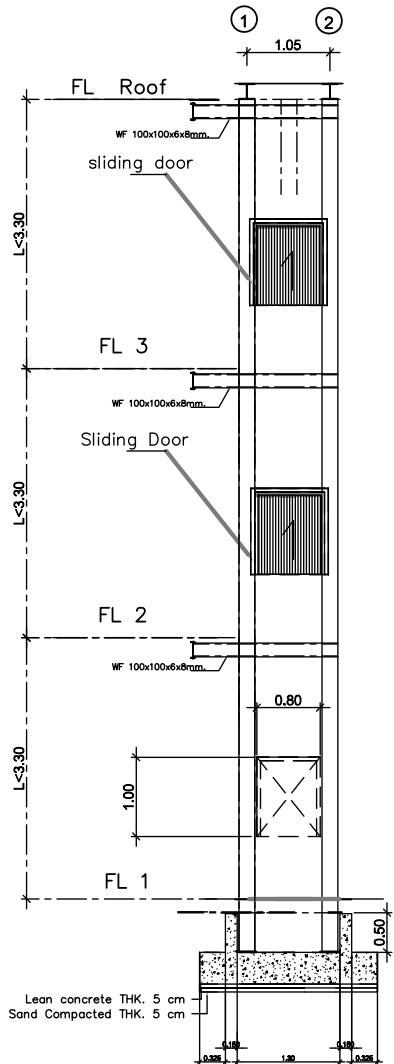


Section structure 1
SCALE 1:50

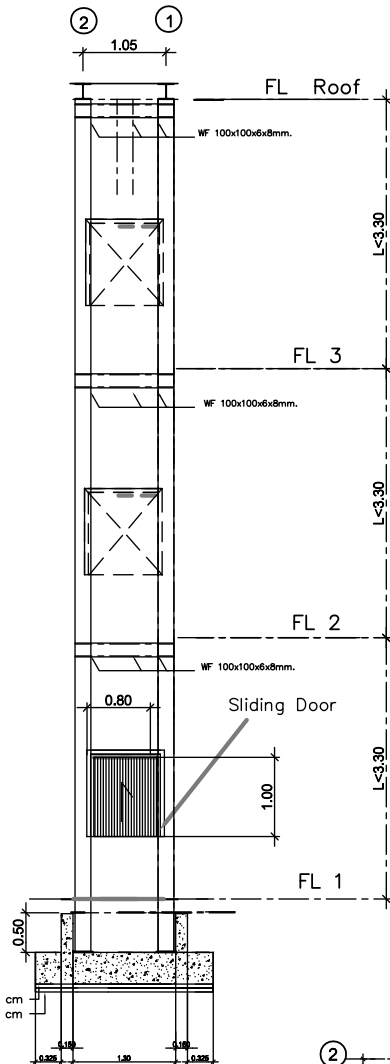


Section structure 2
SCALE 1:50

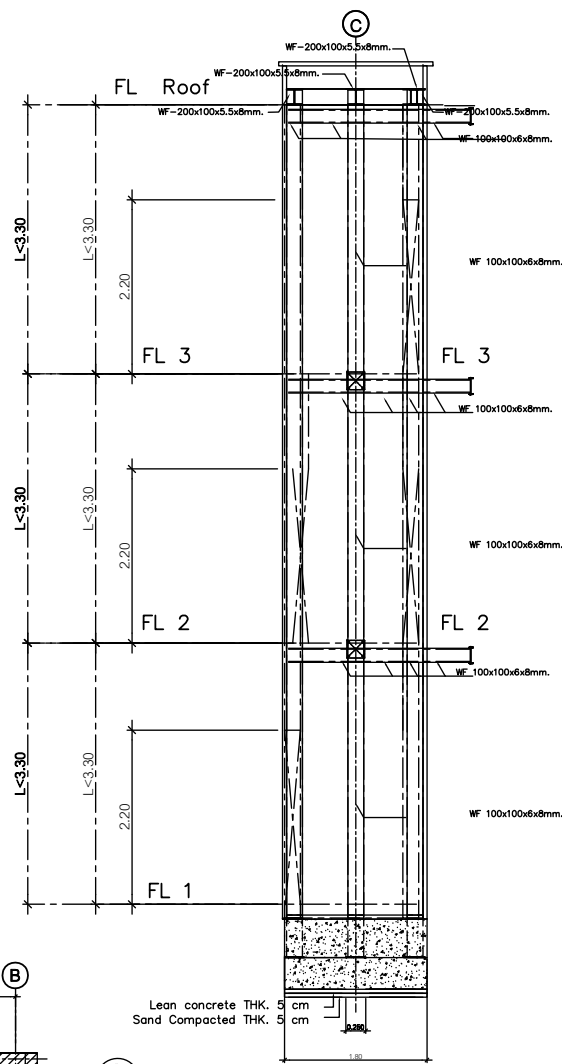
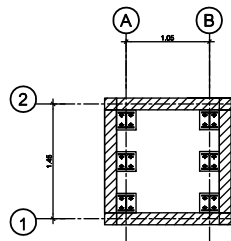
	PROJECT	ARCHITECT	ENGINEER AND DRAFTMAN	DRG. TITLE1 DRG. TITLE2 DRG. TITLE3	SHEET NO. 03 DATE
	โครงการห้องสมุด 3 ชั้น OWNER SITE		สัญญาที่ ๒๒๒๒๓๓๓๓ ๒๒. ๙365 <i>[Signature]</i>	DRG. TITLE1 ฐานราก DRG. TITLE2 DRG. TITLE3	DATE



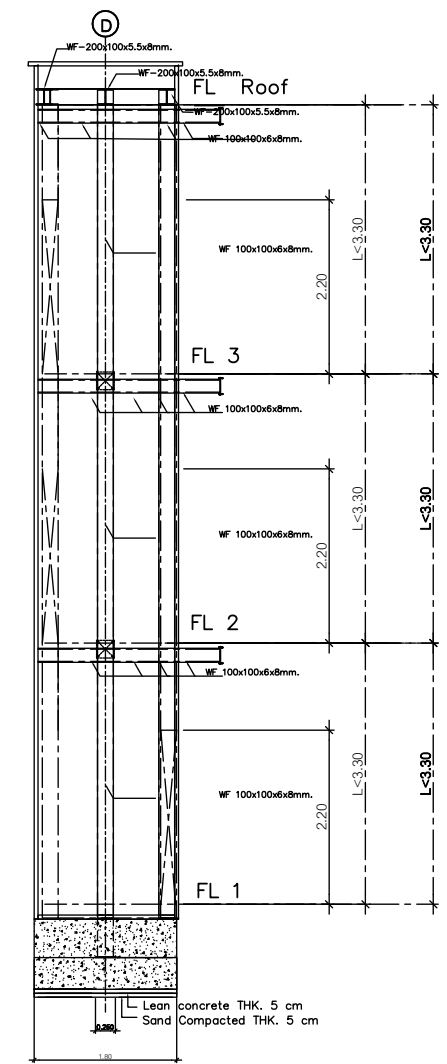
Elevation A
SCALE 1:50



Elevation B
SCALE 1:50



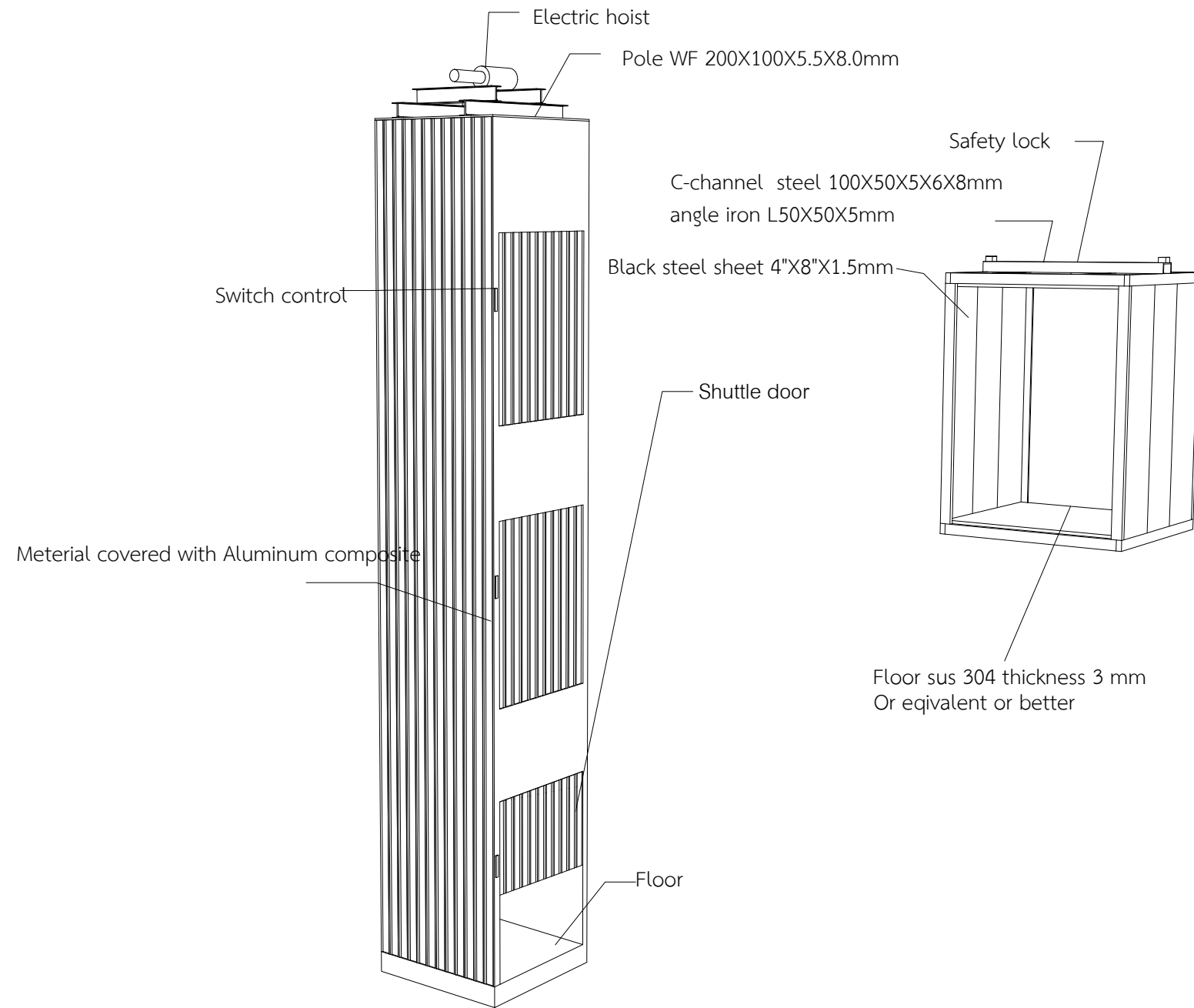
Elevation C
SCALE 1:50



Elevation D
SCALE 1:50

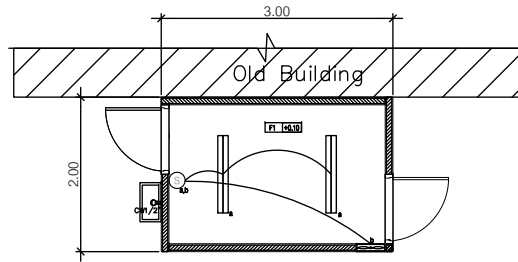


PROJECT	ARCHITECT	ENGINEER AND DRAFTMAN	SHEET NO.
โครงการห้องวางลิฟท์ 3 ชั้น OWNER SITE		อ.วิบูลย์ ชยคณา ศ.ล. 9365 <i>วิบูลย์ ชยคณา</i>	02
		DRG. Title1 รูปบ้าน DRG. Title2 DRG. Title3	DATE

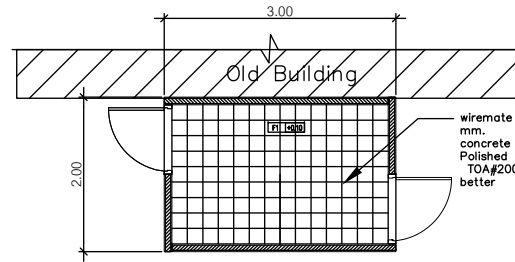
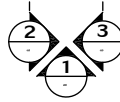


NO	SPECIFICATIONS	DETAILS
1	Lift Type/Model	Cargo Lift
2	Lift machine and motor type (Type of Machine)	The electric wire rope hoist is certified to CE or UL or equivalent or better. - The weight is not less than 2 tons. -Lifting sling height is not less than 12 meters -The speed up and down is not less than 6 m/min -Motor Output not less than 2.2 Kw -Supports 3-phase power 380 V 50Hz.
3	amount	1 set
4	Payload	not less than 300 kilograms
5	speed	not less than 6 m/min
6	Pick-up and drop-off point	3 floors
7	External elevator structure	mast uses WF steel is not less than or equal to 200x100x5.5x8 mm. The size inside the elevator pond is not less than or equal to 1.30x1.30 meters. Inside the elevator about 0.80x0.80x1.00 meters Gutter-lift frame is not less than or equal to U-100x50x5x6x8 mm. Reinforced basket frame with angle steel is not less than or equal to L50x50x5 mm Basket cladding The side wall consists of black steel sheet 4x8x1.5 mm. The floor of the basket consists of SUS 304 that has a thickness of not less than or equal to 3 mm. Lift Support Equipped is not less than or equal to 16 elevator bearings
8	Elevator Door	Door size is not less than or equal to 0.70x1.00 m. The elevator door is a lifting type divided into 2 sets of inner doors and 3 sets of outer doors with bolts Automatic firing prevents the door opening during elevator operation.
9	Outside the elevator structure	Aluminum compositet Thickness is not less than or equal to 3 mm
10	Safety equipment	Safety Clamp System It is a mechanism for napping the elevator body to be firmly attached to the elevator rail in case the sling breaks. Ready to cut the limit of the electrical system entering the drive motor, causing the elevator to stop. Overrun Limit Switches break the circuit when the elevator runs past the floor. Top and bottom
11	Electrical system	3-layer operation control unit Board: Install the elevator control cabinet Control all elevator operations Door Closing Switches The landing door and the door in the elevator cannot be opened. If the elevator does not stop on that floor and all floors must be sealed for it to work. Wiring Power Cord Control the switch panel and work put in the suction perch tube. For safety
12	The press panel calls the lift in front of the floor.	The keypad is made of stainless steel material. A set of push buttons sends elevators along different floors according to the number of parking floors. Push Button Elevator Stop Switch Switch button to turn off and turn on the light inside the elevator Light Switch Key switch, elevator open-close Front of the 1st floor
13	Floor parking control system	It is an automatic floor parking control using a detection device. Microswitch levels can make floor parking possible. Precisely, both upwards and downwards.
14	Elevator protection device runs beyond the floor.	Stop up & Down Limit Switches, which will stop the elevator immediately. In the event of a floor parking system failure. Final Up& Down Limit Switches prevent elevators from running beyond the top and bottom floors of the building.
15	painting	Use industrial standard paints

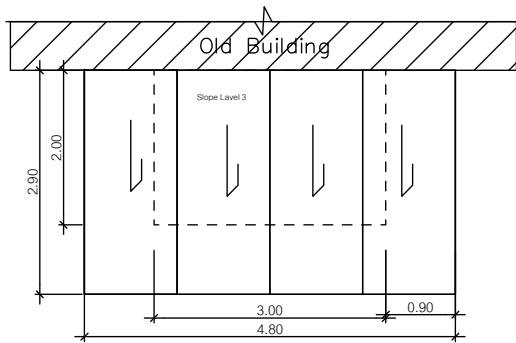
	PROJECT	ARCHITECT	ENGINEER AND DRAFTMAN	SHEET NO.
	โครงการก่อสร้างลิฟท์ 3 ชั้น OWNER SITE		ธีธฤพล ขอดมภา สช. 9365 <i>ธีธฤพล ขอดมภา</i>	05
			DRG. TITLEขยายโครงสร้าง Drg. Title2 Drg. Title3	DATE



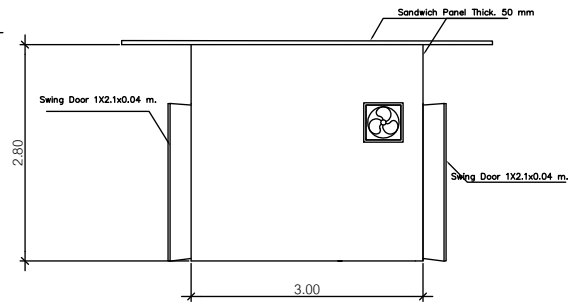
Plan EE & SAN



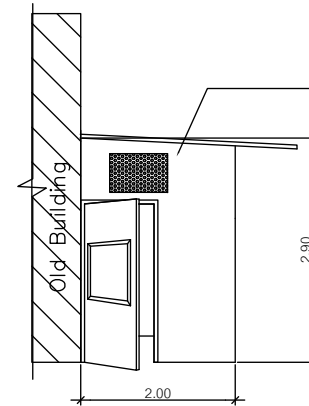
Plan Structure of Floor



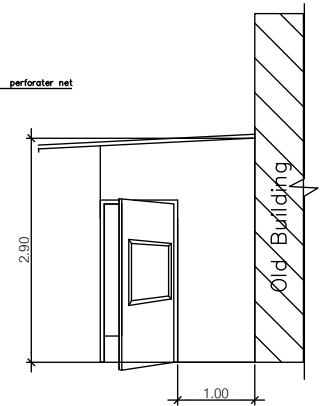
Roof Plan



Elevation 1

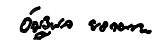


Elevation 2



Elevation 3

Garbage station

	โครงการก่อสร้างลิฟท์ 3 ชั้น OWNER SITE		ENGINEER AND DRAFTMAN	SHEET NO.
			อัญญาพร อรรถภากร สล. 9365 	06
			DRG. TITLE1 ขยายโครงสร้าง Drg. Title2 Drg. Title3	DATE